

Stock Information (As of January 31, 2008)

TOTAL NUMBER OF SHARES AUTHORIZED TO BE ISSUED
396,000,000

TOTAL NUMBER OF SHARES OUTSTANDING
191,714,840

NUMBER OF SHAREHOLDERS
14,629

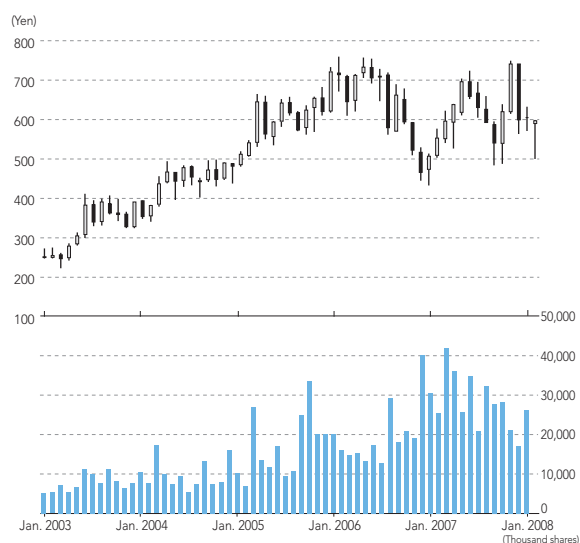
MAJOR SHAREHOLDERS (10 LARGEST)

Name	Equity participation	
	Number of shares held (thousand shares)	Voting stake (%)
Japan Trustee Services Bank, Ltd. (Trust Account)	18,905	9.86
The Master Trust Bank of Japan, Ltd. (Trust Account)	14,922	7.78
Fukoku Mutual Life Insurance Company	8,553	4.46
Mizuho Corporate Bank, Ltd.	6,753	3.52
Takenaka Corporation	6,686	3.48
Trust & Custody Services Bank, Ltd. (Annuity Trust Account)	5,667	2.95
Nippon Life Insurance Company	4,661	2.43
Nipponkoa Insurance Co., Ltd.	4,377	2.28
Mizuho Bank, Ltd.	3,610	1.88
The Chuo Mitsui Trust and Banking Company, Limited	3,156	1.64

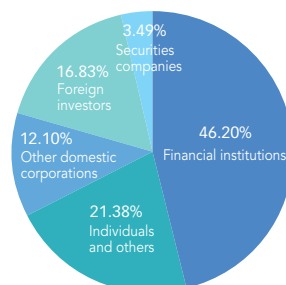
ACQUISITION, DISPOSAL AND HOLDING OF TREASURY STOCK

1. Stock acquired	
Common stock	78,778 shares
Total acquisition cost	¥50,000 thousand
2. Stock disposed and canceled	Not applicable
3. Shares listed as expired	Not applicable
4. Stock held at the fiscal year-end	529,948 shares

STOCK PRICE RANGE AND STOCK TRADING VOLUME



PERCENTAGE OF SHARES HELD (%)



Corporate History

1936/12/25	Established with capital of ¥2 million to construct a baseball stadium for the exclusive use of a professional team.
1937/9	Completed the baseball stadium.
1942/9	Established a consolidated subsidiary, Korakuen Real Estate Co., Ltd.
1949/5	Listed on the Tokyo Stock Exchange.
1949/7	Listed on the Osaka Securities Exchange.
1949/10	Completed a bicycle racetrack.
1955/7	Started operating an urban-style mechanized amusement park.
1959/12	Started operating the Ishiuchi Korakuen Ski Resort.
1962/1-4	Started operating a bowling assembly hall with saunas, halls, restaurants, and etc. (presently the Blue Building).
1962/2	Established a consolidated subsidiary, Korakuen Food Service Co., Ltd.
1965/8	Started operating the Atami Korakuen Hotel.
1971/9	Established a consolidated subsidiary, Korakuen Locomotive Co., Ltd.
1972/5	Established a consolidated subsidiary, Hokkaido Korakuen Co., Ltd.
1973/3	Discontinued the municipal bike race.
1973/4	Started operating the Yellow Building with an off-track betting place, a roller skating arena, bowling alleys, and others.
1973/9	Started operating the Sapporo Korakuen Country Club.
1977/11	Started operating an annex to the Yellow Building with an off-track betting place.
1980/2	Established a consolidated subsidiary, Korakuen Finance Co., Ltd.
1984/7	Established a consolidated subsidiary, Atami Korakuen Co., Ltd.
1985/10	Established a consolidated subsidiary, Osaka Korakuen Hotel Co., Ltd.
1986/10	Started operating Osaka Korakuen Hotel.
1987/2	Established a consolidated subsidiary, Sapporo Korakuen Hotel Co., Ltd.
1987/3	Purchased a consolidated subsidiary, Nishinohon Korakuen Co., Ltd.
1988/3	Started operating Tokyo Dome.
1988/6	Started operating Sapporo Korakuen Hotel.
1989/5	Started operating the Batoh Korakuen Golf Course and Hotel.
1990/9	Changed our company name from Korakuen Co., Ltd. to TOKYO DOME CORPORATION.
1990/12	Started operating BIG EGG Plaza I and Prism Hall.
1992/7	Started operating BIG EGG Plaza II and Geopolis (an indoor amusement park).
1995/4	Purchased a consolidated subsidiary, Mito Korakuen Co., Ltd.
1996/5	Started operating the Mito Korakuen Country Club.
1997/2	Established a consolidated subsidiary, Hokkaido Korakuen Kanko Kaihatsu Co., Ltd.
1999/2	Established a consolidated subsidiary, TOKYO DOME HOTEL CORPORATION.
2000/3	Established a consolidated subsidiary, Tokyo Dome Resort Operations Corp.
2000/6	Started operating Tokyo Dome Hotel. Started operating the Ichihara Korakuen Golf & Sports.
2001/2	Closed the Osaka Korakuen Hotel.
2002/1	Completed liquidation of a consolidated subsidiary, Osaka Korakuen Hotel Co., Ltd.
2002/7	Completed liquidation of a consolidated subsidiary, Atami Korakuen Co., Ltd.
2003/5	Started operating LaQua.
2004/12	Matsudo Kousan Co., Ltd. became a wholly owned subsidiary.
2006/10	Completed liquidation of equity-method affiliate RISOU Golf Service Co., Ltd.
2006/11	Transfer of all shares in consolidated subsidiary Korakuen Finance Co., Ltd.
2006/11	Completed liquidation of consolidated subsidiary SAN-ESU Factoring Co., Ltd.
2007/5	Business transfer of the Sapporo Korakuen Country Club; the Maiko Korakuen Ski Resort and Hotel; the Batoh Korakuen Golf Course and Hotel; the Mito Korakuen Country Club; the Ichihara Korakuen Golf & Sports Center; and the Kijima Korakuen Amusement Park, Hotel and Country Club.
2008/3	Started operating MEETS PORT.