

STOCK INFORMATION (AS OF JANUARY 31, 2009)

Total Number of Shares Authorized to Be Issued

396,000,000

Total Number of Shares Outstanding

191,714,840

Number of Shareholders

16,611

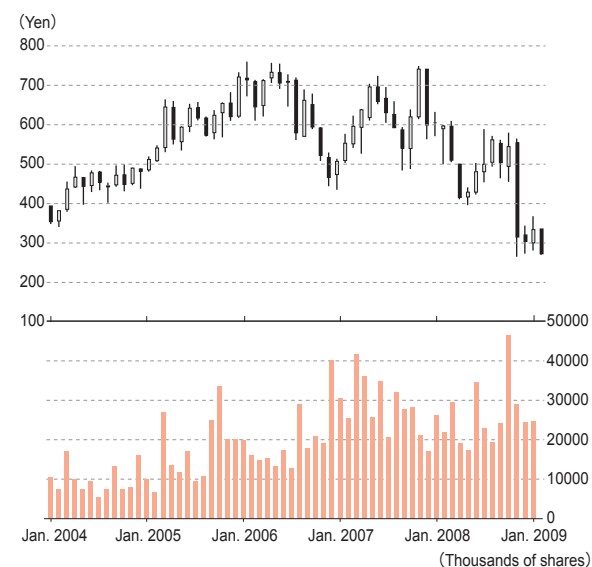
Major Shareholders (10 Largest)

Name	Equity participation	
	Number of shares held (thousand shares)	Voting stake (%)
Japan Trustee Services Bank, Ltd. (Trust Account)	18,691	9.74
The Master Trust Bank of Japan, Ltd. (Trust Account)	15,454	8.06
Japan Trustee Services Bank, Ltd., (Trust Account 4G)	9,650	5.03
Fukoku Mutual Life Insurance Company	8,553	4.46
Mizuho Corporate Bank, Ltd.	6,753	3.52
Takenaka Corporation	6,686	3.48
Trust & Custody Services Bank, Ltd. (Annuity Trust Account)	5,696	2.97
Nippon Life Insurance Company	4,661	2.43
Nipponkoa Insurance Co., Ltd.	4,377	2.28
J.P. MORGAN WHITEFRIARS Equity Derivatives	4,274	2.22

Acquisition, Disposal and Holding of Treasury Stock

1. Stock acquired	
Common stock	179,071 shares
Total acquisition cost	¥75,000 thousand
2. Stock disposed and canceled	Not applicable
3. Shares listed as expired	Not applicable
4. Stock held at the fiscal year-end	709,019 shares

Stock Price Range and Stock Trading Volume



Percentage of Shares Held (%)

