

Stock Information (As of January 31, 2010)

Total Number of Shares Authorized to Be Issued

396,000,000

Total Number of Shares Outstanding

190,933,914

(excludes 780,926 shares of treasury stock)

Number of Shareholders

17,245 (excludes treasury stock)

Major Shareholders (10 Largest)

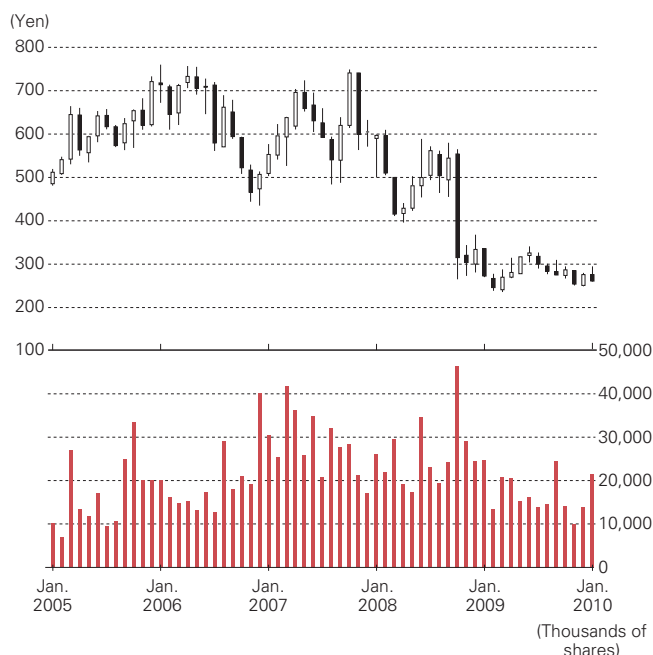
Name	Equity participation	
	Number of shares held (thousand shares)	Voting stake (%)
Japan Trustee Services Bank, Ltd. (Trust Account)	18,752	9.82
The Master Trust Bank of Japan, Ltd. (Trust Account)	14,348	7.51
Fukoku Mutual Life Insurance Company	8,553	4.47
Mizuho Corporate Bank, Ltd.	6,753	3.53
Takenaka Corporation	6,686	3.50
Nipponkoa Insurance Co., Ltd.	4,377	2.29
Mizuho Bank, Ltd.	3,610	1.89
Nippon Life Insurance Company	3,261	1.70
The Chuo Mitsui Trust and Banking Company, Limited	3,156	1.65
Asahi Mutual Life Insurance Company	3,111	1.62

Note: Figures for percentage of shares held are calculated excluding treasury stock (780,926 shares), and are shown rounded down to two decimal places.

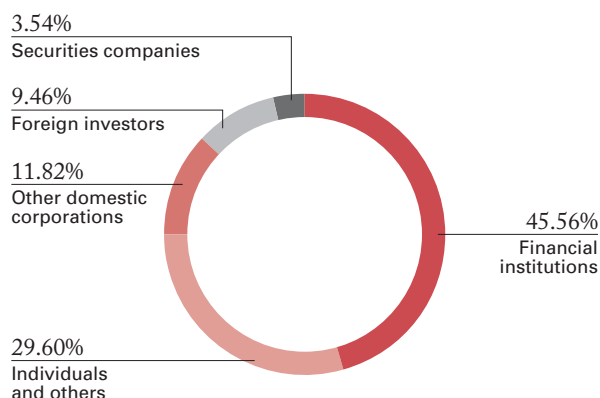
Acquisition, Disposal and Holding of Treasury Stock

1. Stock acquired	
Common stock	71,907 shares
Total acquisition cost	¥20 million
2. Stock disposed and canceled	Not applicable
3. Shares listed as expired	Not applicable
4. Stock held at the fiscal year-end	780,926 shares

Stock Price Range and Stock Trading Volume



Percentage of Shares Held (%)



Note: Figures for percentage of shares held are calculated excluding treasury stock, and are shown rounded down to two decimal places.